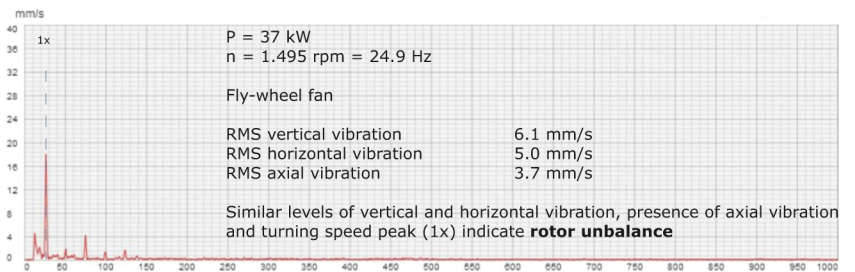
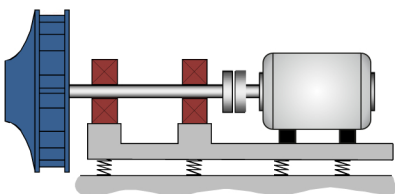


Fan *online* condition monitoring

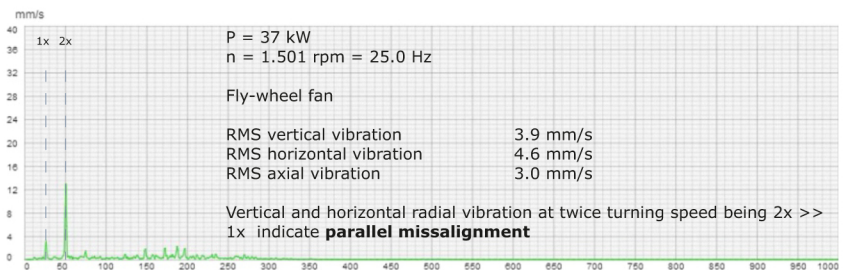
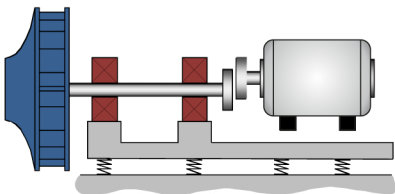


wise monitoring online vibration monitoring system allows the user to prevent malfunction of manufacturing equipment. When performance deviates from acceptable operation conditions, the system manages warnings and alarms with EtherNet interface and digital outputs.

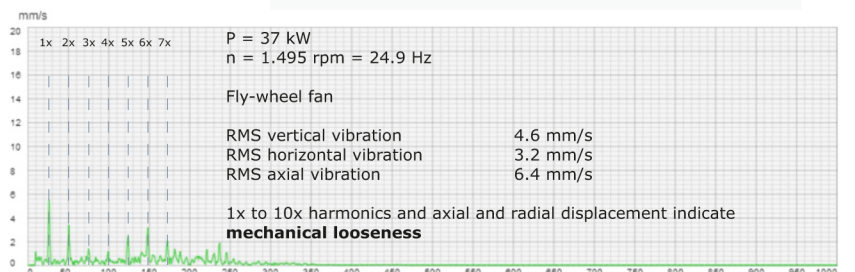
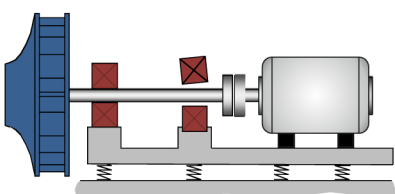
Rotor unbalance



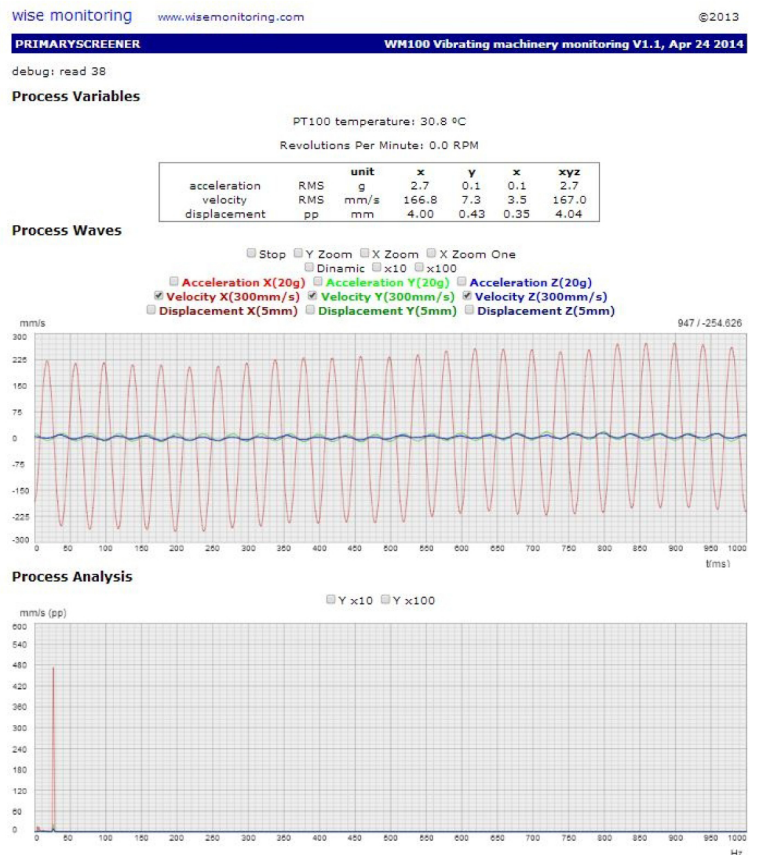
Parallel misalignment



Mechanical looseness



wise monitoring vibration sensor



- Range: ± 20 g
- Accuracy: 0.001 g
- Frequency range:
 - X axis 0,5-1600 Hz
 - Y axis 0,5-550 Hz
 - Z axis 0,5-1600 Hz
 - optional 20 kHz
- Pt100 range: 0-125 °C
- Material: Stainless steel AISI304
- Protection code: IP65
- Operation temperature: -40..85°C
- Power supply: Power over ethernet (POE)
- Communication: Ethernet, MODBUS TCP
- Alarms: 10 alarms
- Optional M8 6 pins connector:
 - 2 digital inputs
 - 2 pnp outputs 20mA 35VDC
 - external power supply 35VDC
- Analogical / Digital converter, DSP microprocessor and memory:
 - Signal conversion in the sensor
 - Management of sensor's I/O for tachometers, proximity switches, start/stop contacts, etc.
 - Sends warning and alarm e-mails
 - Web server in the sensor, no additional external software required to access information or set up alarms