

# WM120

## Vibration digital sensor

The WM120 vibration sensor provides displacement, speed and acceleration values and their spectral analysis for equipment online protection and condition monitoring.

### Typical applications

Pumps	Crushers
Coolers	Mixers
Fans	General equipment
Wind turbines	
Compressors	
Gearboxes	

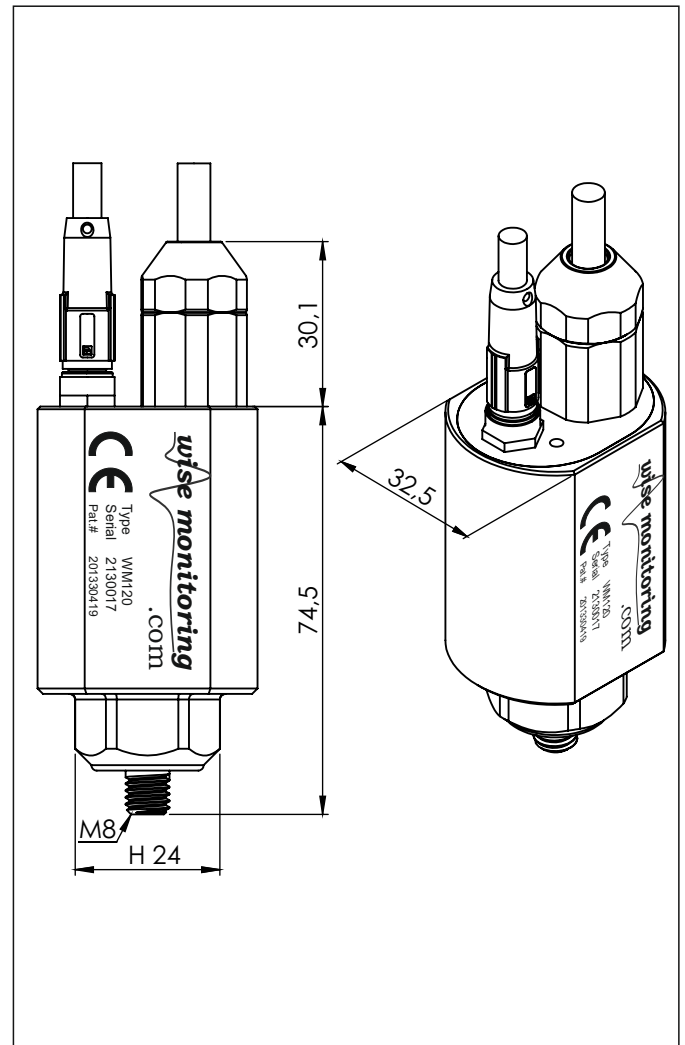
### Technical data

#### Vibration

Measuring range	±20 g
Precision	0.001 g
Frequency range	0.5 Hz-20 kHz

Power supply	POE
Communication	Ethernet MODBUS TCP
Connector	RJ45
Material	AISI 304
Operation temperature	-40° a 85°C
Sealing	IP 65
Weight	240 g

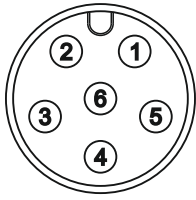
### Dimensions



### WM120 vibration sensor is a patented device under patent number 201330419

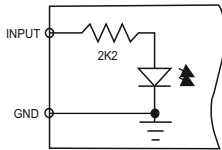
The sensor includes ADC module, DSP microprocessor and memory to analyze the signal at the measuring point and manage an interface web server for user access to information and configurable alarms.

## Connector pinout Digital Input / Output

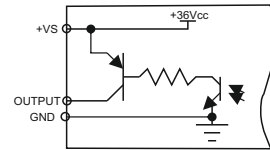


In1	BROWN
In2	WHITE
+Vext	BLUE
Out1	BLACK
Out2	GREY
0v	PINK

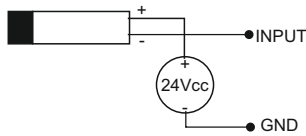
### Internal isolated input circuit



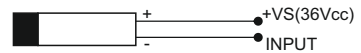
### Internal isolated output circuit



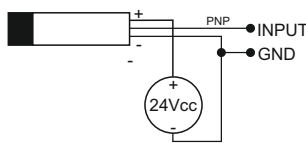
### External powered two-wire inductive sensor



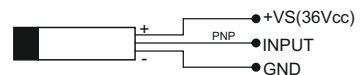
### Internal powered two-wire inductive sensor



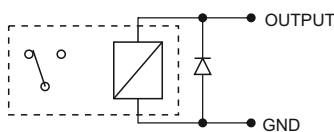
### External powered three-wire pnp sensor



### Internal powered three-wire pnp sensor



### Internal powered 36VDC external relay coil



### External powered 24VDC external relay coil

